



**THINK NEW.  
CLEAN GREEN!**

# **INSTRUCTION MANUAL / SPÜLBOY NU®**





## DEAR SPÜLBOY® CUSTOMER,

We are delighted that you have chosen the NU®, an Original Spülboy® quality product. The globally established Spülboy® brand is recognised internationally for



**Perfect hygiene in manual glass cleaning**



**Certified production in accordance with DIN EN ISO 9001:2008**



**Pioneering product innovations**



**Top quality made in Germany**



**SPÜLBOY® products conform to DIN 6653-3**

All Spülboy® glass washers are portable and ensure the best washing results in all serving areas.

Incidentally, benefit now from our complete range of products and accessories at [www.spuelboy.de](http://www.spuelboy.de)

Have fun with your new NU®!  
Your Spülboy® team

## CONTENTS

1	Foreword	1
2	Unit Description & Purpose	1
3	Safety Instructions	1
4	Exploded View, Spare Parts & Accessories	2
5	Operating Instructions	3
5.1	Setup & Assembly	3
5.2	Start-up	3
5.3	Close of business	3
6	Washing	4
6.1	Pre-washing	4
6.2	Rinsing & Post-rinsing	4
7	Cleaning, Care & Maintenance	4
8	Shut-down	5
9	Sustainability & Disposal	5
10	The Original Spülboy® Warranty	5

### CRYSTAL-CLEAR ADVANTAGES

- **Construction!** One-piece construction, two wash canisters
- **Hygienic design!** Quick and easy cleaning
- **Versatility!** Connection, cleaning, care and use - pioneering technology
- **Quality!** 100% made in Germany
- **Sustainability!** Washing without electricity and with very little water
- **Style!** Contemporary style, modern and clean washing area
- **Safety!** Bacteria and virus-free washing results



## 1 FOREWORD

Please read the instruction manual before using your NU® and keep it accessible for further use and for all users. The NU® may only be used by persons who are familiar with the safety instructions.

## 2 UNIT DESCRIPTION & PURPOSE

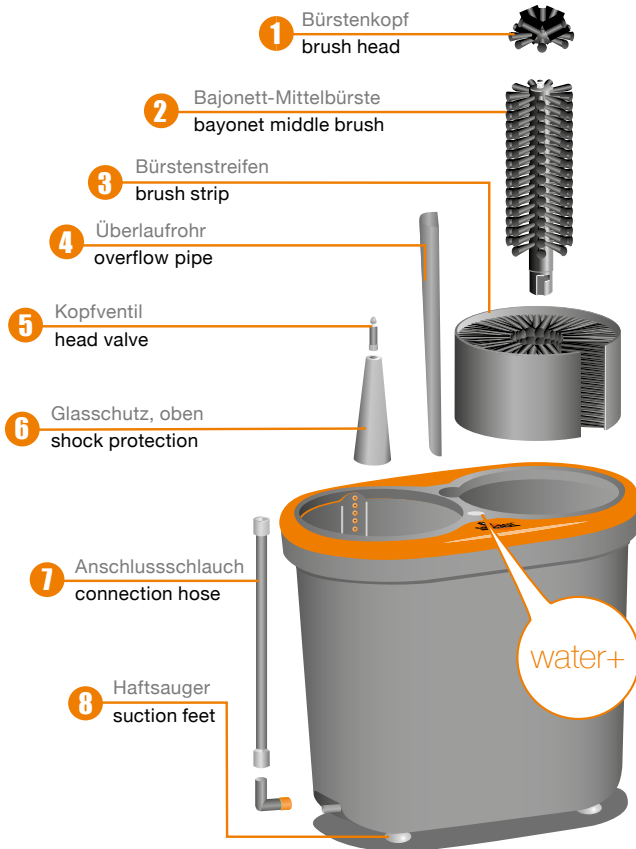
Your NU® glass washer consists of the following parts:

- 1 x Unit incl. pre-wash and rinsing system
- 1 x Bayonet middle brush with head
- 1 x Brush strip
- 1 x Overflow pipe
- 1 x Water connection hose incl. easy clix® quick connector and 3/8" connection
- Optional: Drain hose (portable)  
Cut-out template (portable/ built-in)  
Detergent (tablets + sanitizer powder)

This Spülboy® glass washer is used for the hygienic cleaning of serving receptacles in the catering sector, such as glasses, tankards and carafes.

## 3 SAFETY INSTRUCTIONS!

- Continuously check the visual cleanliness of the NU®/ NU® water+
- Check the connection hose and hose connections for damage or leaks
- Clean the glass washer at a maximum temperature of 60° C in a dishwasher
- The minimum pressure is 2 bar; the permissible maximum pressure is 6 bar (static)
- The glass washer must only be operated in its original condition and with original spare parts
- Stop the washing cycle immediately in case of broken glass and clean the unit thoroughly as described; proceed extremely cautiously and carefully remove all fragments of glass
- Do not tip any food leftovers or other drink residues into the unit!  
This can lead to blockages of the water drain and therefore have a negative impact on the cleaning results.
- Turn off the tap at the close of business!



#### Dimensions

Width: 39,7 cm  
 Height: 33,7 cm  
 Depth: 27 cm  
 Inner canister: 20x17 cm

## UNIT VERSIONS

SPÜLBOY NU®	1700130
SPÜLBOY NU® with detergents	1700132
SPÜLBOY NU® portable	1700134
SPÜLBOY NU® portable with detergents	1700136
SPÜLBOY NU® water +	1700230

## 4 SPARE PARTS & ACCESSORIES

1 NU® brush head, standard	1700370
NU® brush head, big	1700372
2 NU® bayonet middle brush with head, standard	1700360
NU® bayonet middle brush, XL with head, XL	1700362
3 NU® brush strip, standard	1700350
NU® brush strip, XL	1700352
4 NU® overflow pipe	1700514
5 NU® head valve	1700522
6 NU® shock protection, telescope rinsing	1700532
7 NU® connection hose with easy clix®	1700692
8 NU® suction feet with screws	1700650

NU® glass washing tablets, 500g/100 pcs.	1700410
NU® sanitizer powder, 750g	1700412



## 5 OPERATING INSTRUCTIONS

### 5.1 Setup & assembly

- Install the NU® traditionally, in a counter sink or on a counter or built into a counter with a suitable tap connection and drain.
- Fasten the enclosed connection hose to the unit. Figure 1-3.
- Please make sure that the sealing ring is lodged in the designated groove on the unit side to avoid leaks.
- Set the safety slide to „OFF“, attach the connector to the NU® connection nozzle and then engage the slide in the „ON“ position, thus activating the lock. A „clix“ signals a safe connection. See Fig. 2
- Set up the NU® at a suitable location and connect the end of the water connection hose to the tap water connection. Please also make sure that the seal fits correctly on the hose side.

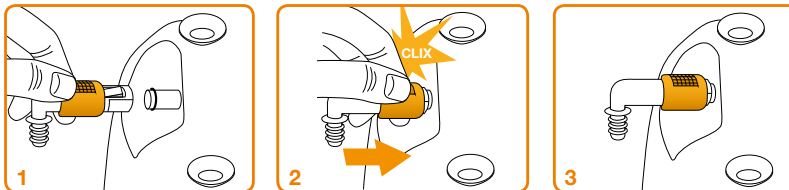
Your Spülboy® team will be happy to inform you about alternative connection options.

### 5.2 Start-up

- Before starting up your NU® for the first time, after a prolonged period out of use or after repairs, please rinse the glass washer for approx. 5 seconds by actuating the rinsing function.
- Fill the pre-wash canister with tap water up to the top overflow and add one (1) NU® glass washing tablet in accordance with the dosing instructions. Alternatively, use a quarter of a Spülboy® Classic glass washing tablet.
- Adjust the water on the rinse valve. The water pressure is perfect when the water jets and rinsing function meet horizontally.

### 5.3 Close of business

- Turn off the tap at the close of business
- Clean the unit (see point 7)





## 6 WASHING

### 6.1 Pre-washing

- Check each receptacle / glass to be cleaned for any drink residues or other foreign bodies (e.g. lemon slices, straws) before starting the washing cycle and place them in a separate container.
- Hold the glass centrally in the pre-wash canister over the middle brush and clean with at least 4 full upward and downward movements (do not rotate).
- Light foaming of the rinsing water shows that the NU® glass washing tablet is working. If no foam appears, simply place another (1) glass washing tablet in the pre-wash canister.
- 1 NU® tablet ensures satisfactory cleaning performance for approx. 4-6 hours.

**Please note: The washing results may vary when third-party detergent is used.**

### 6.2 Rinsing & Post-rinsing

- Place the glass on the telescopic rinsing unit and carefully rinse it from the inside and outside.  
Rinse with tap water for 3 seconds for the best results.
- The rinsing function also activates the fresh water supply in the pre-wash canister at the same time.
- **NU® water+:** You have the option to top up the prewash canister with additional fresh water manually and/or as required by pressing the soft point.
- The average water consumption per glass cleaning cycle is approx. 8 cl.

## 7 CLEANING, CARE & MAINTENANCE

- Make sure that you continuously check and keep the glass washer and the surrounding area clean, even when it is being used. The cleanliness of the unit, brushes and surrounding area should be checked at least once an hour.
- Clean the glass washer thoroughly at least once a day when used regularly. It should also be cleaned before starting up the unit for the first time, after a prolonged period out of use or after repairs.
- To do this, remove the overflow pipe and drain the water. Remove the middle brush and brush strip from the unit and clean with the Original NU® sanitizer powder. Take the NU® out of the sink and clean thoroughly with a suitable cloth and Spülboy® detergent.
- Place the brushes in a container, sprinkle 2 tablespoons of Spülboy® sanitizer powder over the brushes and add hot water so that the brushes are completely covered.

**Note! The cleaning results may vary and the unit may be damaged if third-party substances are used.**

- Allow the sanitizer powder to take effect for approx. 8-12 hours.
- Rinse the brushes thoroughly with fresh water and reinsert into the pre-wash canister before using the unit again.





## 8 SHUTDOWN

- Turn off the tap
- Disconnect the NU® from the water supply
- Clean the unit and brushes (see point 7)!

## 10 THE ORIGINAL SPÜLBOY® WARRANTY

Schäfer Produkte GmbH offers you a manufacturers warranty of 2 years from the date of purchase. We remediate all defects free of charge during this period, which are proven to be due to faulty material or workmanship and substantially impair its function. Other claims are excluded, e.g. wear down on brushes.

The warranty does not cover damage resulting from failure to follow the operating instructions, improper handling or normal wear and tear.

The warranty becomes void in case of any kind of intervention not authorised by Schäfer Produkte GmbH. If a repair should be necessary, please send the NU® without accessories, cleaned and well packed, with a description of the fault and proof of purchase, directly to Schäfer Produkte GmbH.

The statutory warranty rights towards the seller and any possible seller warranties remain unaffected.

### Loss of warranty in the following cases:

- Improper handling
- Improper cleaning
- Inappropriate use
- Destruction of the unit by force
- Opening of the glass washer
- Use of caustic or chlorinated products

## 9 SUSTAINABILITY & DISPOSAL

Perfect hygiene and cleanliness as well as environmental production compatibility give each other mutually at Spülboy®. All Spülboy® model work without electricity and with minimum and highly efficient water consumption per glass cleaning cycle.

Approx. 8 cl of water are required for each washing cycle and the water is only used when the rinsing function is actuated. The Original Spülboy® washing tablets are completely biodegradable.

Spülboy® uses only high-quality and tested plastics. The long service life is further enhanced by the modular product system – each component can be replaced as a spare part.

All Spülboy® glass washers are fully recyclable and therefore do not need to be disposed of as hazardous waste. Spülboy® is a member of Resy Organisation für Wertstoffentsorgung GmbH.



Please dispose used products and packaging in the designated bins.



**For translations just click.**

NU® instruction manuals are available for download in many languages at [www.spuelboy.de](http://www.spuelboy.de)



**Schäfer Produkte GmbH**  
Simonshöfchen 53  
42327 Wuppertal Germany  
phone +49 202 69532-0  
fax +49 202 69532-10  
e-mail [info@spuelboy.de](mailto:info@spuelboy.de)  
[www.spuelboy.de](http://www.spuelboy.de)